

str. 139 / úloha 755

$$m_e = 1 \text{ kg}$$

$$t_{\text{ce}} = 0^\circ\text{C}$$

$$t_{\text{kon}} = 100^\circ\text{C}$$

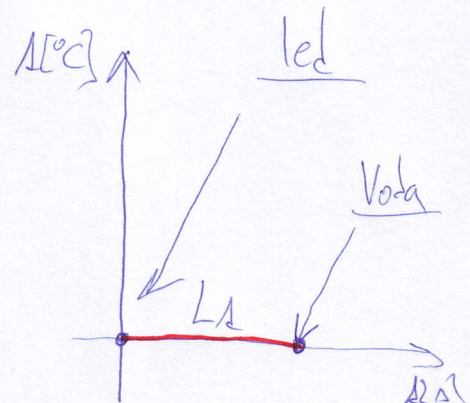
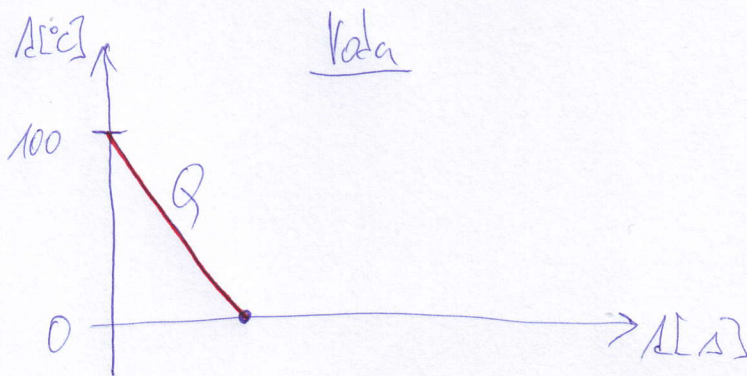
$$t = 0^\circ\text{C}$$

$$m_r = ? \text{ [kg]}$$

$$L_d = 334\,000 \frac{\text{J}}{\text{kg}}$$

$$C_r = 4200 \frac{\text{J}}{\text{kg}\cdot^\circ\text{C}}$$

Náčet:



Plati:

$$Q = L_d$$

$$L_d = m \cdot L_d$$

$$L_d = 1 \cdot 334\,000$$

$$Q = L_d = 334\,000 \text{ J}$$

Ametnosť pridanej vody je 0,8 kg.

$$Q = m_r \cdot C_r \cdot (t_{\text{kon}} - t)$$

$$m_r = \frac{Q}{C_r \cdot (t_{\text{kon}} - t)}$$

$$m_r = \frac{334\,000}{4200 \cdot (100 - 0)}$$

$$m_r = 0,8 \text{ kg}$$